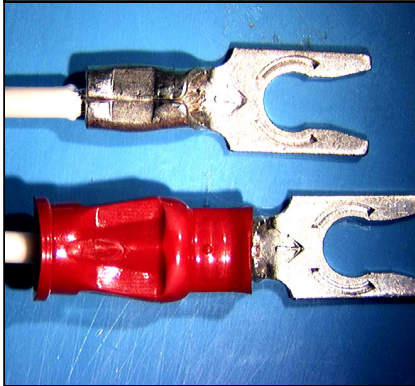


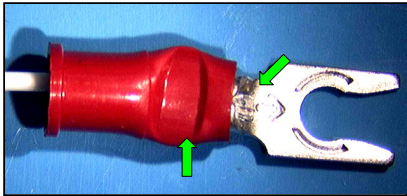
**CRIMPED TERMINATIONS
SPADE LUG TERMINALS**



SPADE LUG TERMINALS

Spade lug terminals are used to dress and terminate a conductor to a termination point or post with a mechanically secure, "partially captured" connection. The "partially captured" feature allows the terminal to be removed from a termination post without completely removing the compression nut (as is required with ring lugs). This security feature may be beneficial in moderate vibration environments where there is a requirement for the termination to be disconnected.

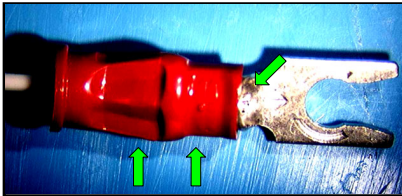
See Section 2.01 "Crimped Terminations – General Requirements" for common accept / reject criteria.



**PREFERRED
SINGLE CRIMP INSULATED**

The contact has been deformed only by tool indenters. Indents are symmetrical and centered on the crimp barrel. No exposed base metal or other damage. Wire strand ends are visible. Proper insulation spacing (C).

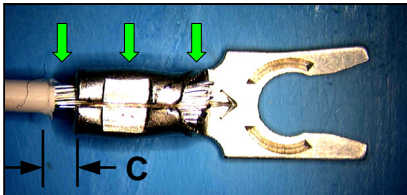
[NASA-STD-8739.4 \[19.6.1.c \]](#)



**PREFERRED
DUAL CRIMP INSULATED**

The contact has been deformed only by tool indenters. Indents are symmetrical and properly located. Insulation crimp is properly set to provide appropriate strain relief. Wire strand ends are visible. Proper insulation spacing (C).

[NASA-STD-8739.4 \[19.6.1.c \]](#)



**PREFERRED
UNINSULATED**

The contact has been deformed only by tool indenters. Indents are symmetrical and centered on the crimp barrel. No exposed base metal or other damage. Wire strand ends are visible. Proper insulation spacing (C).

[NASA-STD-8739.4 \[19.6.1.c \]](#)

NASA WORKMANSHIP STANDARDS



NATIONAL AERONAUTICS AND
SPACE ADMINISTRATION

JOHNSON SPACE CENTER
HOUSTON, TEXAS USA 77058

Released:
03.30.2001

Revision:

Revision Date:

Book:
2

Section:
2.06

Page:
1

**THIS PAGE IS
INTENTIONALLY BLANK.**